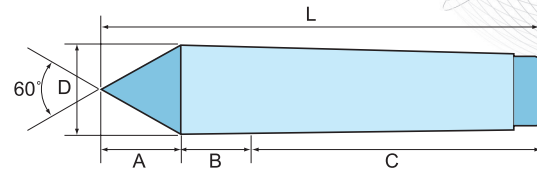


NEW



- Suit for lathe & grinding machine
- Hardened & precision ground
- DIN806



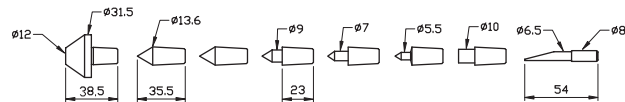
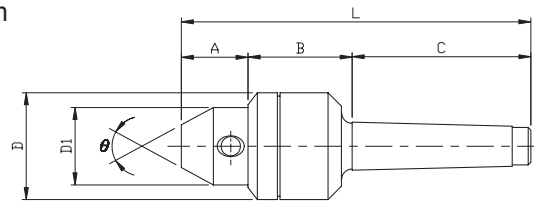
ORDER NO.	SIZE	A	B	C	D	L	Weight (kgs)	CODE NO
VLC-126	MT2	18	7	75	19	100	0.16	5001-111
VLC-127	MT3	24	10	91	25	125	0.34	5001-112
VLC-128	MT4	30	11	114	32	155	0.73	5001-113
VLC-129	MT5	39	16	145	46	200	1.9	5001-114
VLC-130	MT6	54	29	187	64	270	5.12	5001-115

Inter-Changeable Point Rolling Center

Economical Type

NEW

- 7 points / set
- Concentricity : $\pm 0.008\text{mm}$
- With high grade bearing



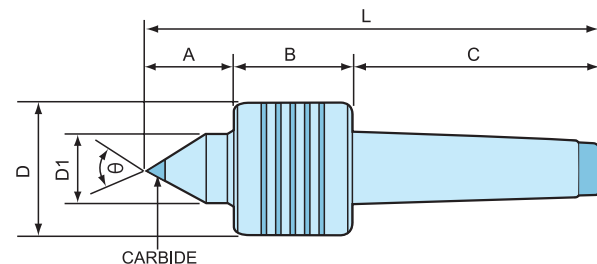
Unit:mm

ORDER NO.	TYPE	A	B	C	D	D1	L	Accuracy	Speed Max R.P.M	θ	G.W. Weight Kgs	CODE NO.
VLC-612	MT2	24	39	69	40	29	132	0.005	1800	60°	0.85	5001-121
VLC-613	MT3	24	43	91	46	30	158	0.005	1600	60°	1.1	5001-122
VLC-614	MT4	24	44	107	48	32	175	0.005	1600	60°	1.4	5001-123
VLC-615	MT5	25	64	138	63.5	35	227	0.005	1000	60°	3.8	5001-124

Live Lathe Center

NEW

- K20 carbide tipped, HRC 70°
- Hardened & prcision ground
- Concentricity : 0.0002" (0.005mm)



ORDER NO.	TYPE	A	B	C	D	D1	L	θ	G.W. weight kgs	CODE NO
VLC-172	MT2	32	40	72	41	25	144	60°	0.55	5001-131
VLC-173	MT3	34	45	88	45	30	167	60°	0.84	5001-132
VLC-174	MT4	34	45	109	45	30	188	60°	1.15	5001-133
VLC-175	MT5	50	61	134	68	45	245	60°	3.3	5001-134